



## ES 388 TRAY LOADING SYSTEM

Fully automatic and flexible system for loading minced meat portions and burgers into trays.



The Handtmann ES 388 tray loading system with a loading performance of up to 120 portions per minute has been designed for depositing burgers, minced meat portions and comparable products such as rib burgers and cevapcici into tray packaging. In combination with a Handtmann minced meat line or a single-lane forming system, this creates a perfectly coordinated overall solution from the filling/portioning process to the packaging solution for medium-scale and industrial-scale food-processing operations.

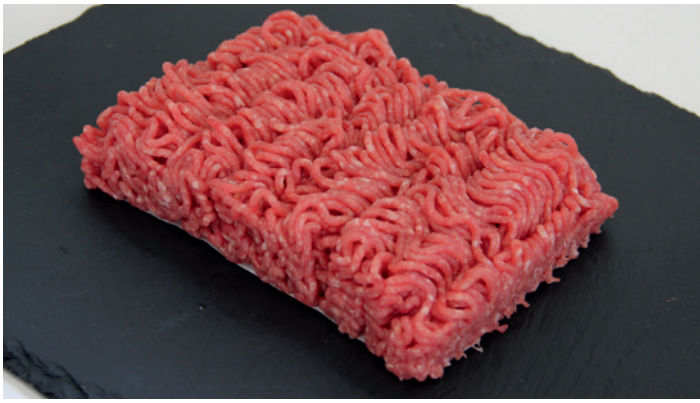
### ADVANTAGES

- > High rationalization effect with significant increase in efficiency due to a perfectly coordinated overall solution from the filling/portioning process through to packaging. Optionally available with integrated Handtmann WS 910 advanced weighing system for excellent weight accuracy and minimum give-away
- > Handtmann Line Control (HLC) with intelligent start/stop and pause scenarios, central program changeover, standardized interface for downstream devices such as packaging machines, and optional networking with HCU software
- > Significant cost reduction due to less manpower as well as excellent weight accuracy of the individual products
- > Flexibility to handle a wide range of tray formats and products Tray change within seconds thanks to easily adjustable tray guides and the option of positioning trays manually

### FULLY AUTOMATIC PROCESS FROM FILLING AND PORTIONING TO LOADING INTO TRAYS

The ES 388 tray loading system offers medium-scale and industrial-scale food-processing operations a complete automation solution from the filling and portioning process to the loading of the products into the tray packaging. It can be deployed as a system combination with the integrated GMD 991-2 or GMD 99-3 minced meat portioner for portions of minced meat, or a single-lane forming system such as the FS 525, FS 507, or FS 508. Modules such as the Handtmann WS 910 advanced weighing system for additional weight and process control or the SB 913 sorting belt for discharging over- or underweight products can be integrated at choice. Its modular design accommodates different installation options.

The Handtmann ES 388 tray loading system is suitable for the most diverse tray packaging and also allows for the manual positioning of trays in addition to fully automatic feeding. The modules of the ES 388 tray loading system are integrated into the central and networked Handtmann control system, which ensures perfect synchronization and simplest operation of both modules and overall line. The elimination of manual intervention ensures excellent hygienic production conditions and thus contributes to a process that is gentle on the product.



#### BASIC EQUIPMENT

- > EB 386 loading conveyor, TD 387 tray denester

#### OPTIONS

- > Various installation options for the overall line
- > Tray stopper for burger application
- > Please note options of the respective modules

#### TECHNICAL DATA

Capacity	up to 120 products per minute (depending on product/tray)
Container dimensions	Length: 110 to 325 mm Width: 110 to 265 mm Height: 30 to 80 mm
Depositing options	<ul style="list-style-type: none"> <li>&gt; Individual portions</li> <li>&gt; Double portions</li> <li>&gt; Individual (sequential)</li> <li>&gt; Shingled (sequential)</li> <li>&gt; Stacked (sequential)</li> </ul>
Conveyor belt	<ul style="list-style-type: none"> <li>&gt; Inlet height/transfer height: 980 to 1,310 mm</li> <li>&gt; Outlet height/transfer height: 800 to 1,025 mm</li> </ul>
Technical prerequisite of the VF	VF 800: PCM, X40 (not possible with VF 804 S) VF 600: PCK4, X40
Connected loads	230 V AC/1 kW
Safety category	PLd