



## FS 525 FORMING SYSTEM

ALL-IN-ONE FORMING SYSTEM  
FOR FORMED PRODUCTS WITH  
OPTIONAL FILLING



Meat, dough, vegetarian and vegan products, tofu, meat substitutes, dairy, confectionery, fish, pet food

The FS 525 forming and cutting system combines two different forming principles and thus achieves maximum flexibility in industrial applications: The hole plate forming technology allows the production of free-formed 3D products. The rotary cutter allows the production of different cross-sections with a straight cut. The co-extrusion option for filled products adds to the variety.

### YOUR ADVANTAGES

- Maximum flexibility in the production of formed products thanks to two forming principles
- Enhanced product diversity thanks to the option of co-extrusion for free-formed products with inner filling
- Extremely economical production thanks to simple and fast conversion in just a few minutes
- First-class product quality due to shortest filling product paths and gentle forming principle
- High production output thanks to high cycle times and continuous process
- Short payback period thanks to maximum machine utilisation and reduction of the machine park
- Easy integration into comprehensive production processes and synchronisation with automation options

### ALL-IN-ONE FORMING SYSTEM OFFERING PRODUCT DIVERSITY

#### Variety of products and shapes in first-class product quality

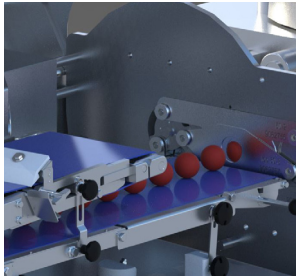
The particularly gentle feeding and forming principle ensures first-class product quality and product shape retention. The forming technology can be quickly changed within a few minutes thanks to the few components being used. Different structured rollers (e.g. pyramid-, square-shaped, steak roller) or a water spraying device further extend the range of applications. This ensures maximum flexibility and efficiency for the implementation of a versatile product portfolio. All formed products with only one system. All-in-one!

#### Co-extrusion option for filled formed products

The option of co-extrusion also offers the possibility for the production of filled and free-formed products with closed or open ends of calibres 20 to 50 mm. Thanks to servo technology, the positioning of the filling, be it pasty, chunky or soft, is always accurate and precise in terms of weight. Simple operation, fast set-up, assembly and disassembly allow a wide variety of products with fast product changes. A production output of up to 150 portions per minute is thus possible in a single lane.

#### Automation options from the weighing system through to the packaging solution

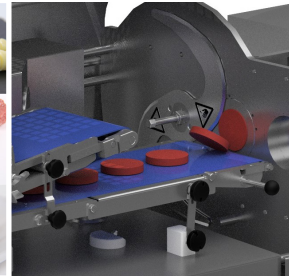
The FS 525 forming and cutting system can be perfectly incorporated into integrated processes or be synchronised with automation options, such as a weighing system, tray feeding or depositing into thermo-forming machines. A wide range of digital options ensures future-proof production.



↑ Forming principle:  
Free forming and optional flattening



↑ Free-formed/flattened products



↑ Forming principle:  
Forming and cutting



↑ Formed and cut products



## CO-EXTRUSION OPTIONS

- Servo-controlled valve for the inner product available with valve sleeves in various versions
- Mould inserts and hole plates

## TECHNICAL DATA:

Category	Performance characteristics
Free forming with hole plate concept	<ul style="list-style-type: none"> <li>■ Product diameter 18 to 100 mm</li> <li>■ Production output: up to 250 cycles/min.</li> <li>■ Option: hole plate sets with additional mould components</li> </ul>
Forming and cutting with rotary cutting principle	<ul style="list-style-type: none"> <li>■ Product diameter 15 to 130 mm</li> <li>■ Production output: up to 350 cuts/minute (2-arm blade) up to 200 cuts/minute (1-arm blade)</li> </ul>
Wire cutter	<ul style="list-style-type: none"> <li>■ For cohesive products (butter, cheese), dough-based products (potato), dough</li> <li>■ Product calibre up to 130 mm</li> <li>■ Forming set (steel) from dia. 15 mm to dia. 130 mm</li> </ul>
Flattening height	10 to 50 mm
Belt width	250 mm
Maximum product height	100 mm
Conveyor belt speed	max. 1 m/sec.
Outlet height/transfer height	Adjustable from 1,025 mm to 1,120 mm